

Natale

GIUCY GIUCE



100
years



Francesca's Christmas Garden Quilt designed by: **Giucy Giuce** • Quilt Size: **76" x 76"**
Skill Level: **Advanced Beginner** • andoverfabrics.com

andover

•
•
• makower.uk
•

Free Pattern Download Available

1384 Broadway New York, NY 10018
Tel. (800) 223-5678 • andoverfabrics.com

9/15/22

Francesca's Christmas Garden Quilt

Introducing Andover Fabrics new collection: **NATALE** by Giucy Giuce

Quilt designed by Giucy Giuce



Quilt finishes 76" x 76"

24 Nine Patch Blocks: 9" x 9"

Multiple borders, plain and pieced, uniquely frame the elegant floral bouquet in the center of this wall quilt or queen topper. Quick piecing methods make easy work of this spin on a traditional design.

Cutting Directions

Note: Read assembly directions before cutting patches. All measurements are cut sizes and include 1/4" seam allowances. A fat 1/8 is a 9" x 20"-22" cut of fabric. A fat 1/4 is an 18" x 20"-22" cut. Borders are cut the exact lengths required plus 1/4" seam allowances. WOF designates the width of fabric from selvedge to selvedge (approximately 42" wide).

- Fabric A** Cut (1) square 13 1/4" (center)
- Fabric B** Cut (8) squares 4 1/2" (Borders 3 & 7 corners)
- Fabric C** Fussy-cut (2) top/bottom borders 4 1/2" x 32 1/2", cut crosswise (Border 2)
Fussy-cut (2) side borders 4 1/2" x 24 1/2"
Fussy-cut (4) squares 4 1/2" (Border 7)
- Fabric D** Cut (6) squares 5" (4 7/8") for HST
(2 for Border 3, 4 for Border 7)
- Fabric E** Cut (5) strips 3 1/2" x 16" for Nine-Patch Blocks
- Fabric F** Cut (4) strips 3 1/2" x 16" for Nine-Patch Blocks
Cut (6) squares 5" (4 7/8") for HST (2 for Border 3, 4 for Border 7)
Cut (8) squares 4" (3 7/8") for HST (Border 1)
- Fabric G** Cut (4) squares 5" (4 7/8") for HST (Border 7)
- Fabric H** Cut (5) strips 3 1/2" x 16" for Nine-Patch Blocks
Cut (4) squares 5" (4 7/8") for HST (Border 7)
- Fabric I** Cut (4) strips 3 1/2" x 16" for Nine-Patch Blocks
Cut (6) squares 5" (4 7/8") for HST
(2 for Border 3, 4 for border 7)
- Fabric J** Cut (4) squares 5" (4 7/8") for HST (Border 7)
Cut (12) squares 4" (3 7/8") for HST (Border 1)
Cut (4) squares 3 1/2" (Border 1 corners)
- Fabric K** Cut (2) squares 5" (4 7/8") for HST (Border 3)

Fabric Requirements

		Yardage	Fabric
Fabric A	center	fat 1/4	9872-G
Fabric B	borders	fat 1/4	9873-G
Fabric C	borders	3/4 yard	9873-L
Fabric D	HST	fat 1/4	9873-R
Fabric E	blocks	fat 1/4	9874-G1
Fabric F	blocks, HST*	1/2 yard	9874-R
Fabric G	HST	fat 1/8	9874-T
Fabric H	blocks, HST	1/2 yard	9879-G1
Fabric I	blocks, HST	3/8 yard	9879-P
Fabric J	HST	3/8 yard	9881-G
Fabric K	HST	fat 1/8	9881-O
Fabric L	blocks	fat 1/4	673-C
Fabric M	blocks	fat 1/4	673-LG
Fabric N	blocks	1 yard	673-LY
Fabric O	blocks	1/2 yard	675-LC
Fabric P	border, HST	3/4 yard	675-Y
Fabric Q	HST	fat 1/8	676-G
Fabric R	blocks	fat 1/4	676-L
Fabric S	blocks, HST	1/2 yard	676-R
Fabric T	HST	3/4 yard	9248-G4
Fabric U	HST	3/8 yard	9248-G5
Fabric V	HST	fat 1/8	9248-O5
Fabric W	border, HST	1/2 yard	9248-R1
Binding		5/8 yard	674-R
Backing		5 yards	9873-R

*HST = Half-Square Triangles

- Fabric L** Cut (5) strips 3 1/2" x 16" for Nine-Patch Blocks
- Fabric M** Cut (5) strips 3 1/2" x 16" for Nine-Patch Blocks
- Fabric N** Cut (2) squares 10" (trimmed later), cut in half diagonally to make 4 half-square triangles (center block)
Cut (10) strips 3 1/2" x 16" for Nine-Patch Blocks
- Fabric O** Cut (8) strips 3 1/2" x 16" for Nine-Patch Blocks
- Fabric P** Cut (2) t/b borders 3" x 68 1/2", cut lengthwise (Border 6)
Cut (2) side borders 3" x 63 1/2"
Cut (2) squares 5" (4 7/8") for HST (Border 3)
- Fabric Q** Cut (4) squares 5" (4 7/8") for HST (Border 7)
- Fabric R** Cut (4) strips 3 1/2" x 16" for Nine-Patch Blocks

Francesca's Christmas Garden Quilt

Fabric S Cut (4) strips 3½" x 16" for Nine-Patch Blocks
 Cut (6) squares 5" (4⅞") for HST
 (2 for Border 3, 4 for Border 7)
 Cut (4) squares 4" (3⅞") for HST (Border 1)

Fabric T Cut (32) squares 5" (4⅞") for HST (Border 7)

Fabric U Cut (16) squares 5" (4⅞") for HST (Border 3)

Fabric V Cut (2) squares 5" (4⅞") for HST (Border 3)

Fabric W Cut (2) t/b borders 3" x 45½" cut crosswise and pieced (Border 4)
 Cut (2) side borders 3" x 40½"
 Cut (2) squares 5" (4⅞") for HST (Border 3)

Binding Cut (8) strips 2½" x WOF

Backing Cut (2) panels 42" x 84", pieced to fit quilt top with overlap on all sides

Making the Quilt

1. Referring to the Quilt Diagram, sew Fabric N triangles to sides of the Fabric A square. Trim the pieced square to 18½" if needed, leaving an even seam allowance all around.

2. **Border 1:** This border is made with half-square triangles (HST) that finish 3" square. Use your favorite method to make HST, or follow these directions. Cut squares 4" for HST that will be trimmed after stitching. If you prefer not to trim, cut squares 3⅞". Draw a diagonal line on the wrong side of each Fabric J 4" (3⅞") square. Place a marked square on a Fabric F or S square, right sides together. Sew ¼" seam on each side of the marked line; cut apart on the marked line (Diagram 1). Press open to make pieced HST. Trim the HST to 3½" square if needed. Make 24 total HST.

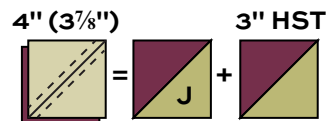


Diagram 1 – Make 24 for Border 1

Join 6 HST to make each of 4 borders, noting the fabric placement and rotating the triangles as shown. Sew borders to the sides. Add a Fabric J square to the ends of remaining borders and sew to the top and bottom.

3. **Border 2:** Sew short Fabric C borders to the sides of the quilt. Sew longer borders to the top and bottom.

4. **Border 3:** Refer to Diagram 2 and follow the directions in Step 2 to make 32 HST that finish 4" square. Use Fabric U 5" (4⅞") squares, joined with the 5" squares listed in the cutting for Border 3 HST. Trim the HST to 4½" square if needed. Position 8 HST on each side of the quilt, arranging them as shown. Note the orientation of the triangles. Looking through a camera or the wrong end of binoculars may help you find mistakes. Once you are satisfied with the arrangement, join the HST to make 4 borders. Sew to the sides of the quilt. Join a Fabric B square to ends of remaining borders, and sew to the top and bottom.

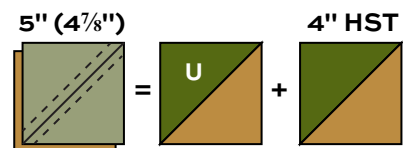


Diagram 2 – Make 32 for Border 3

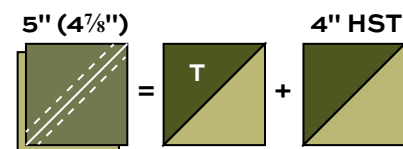
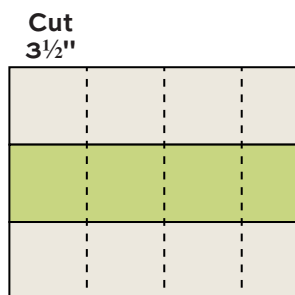
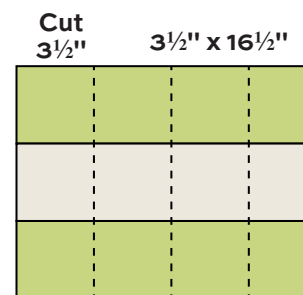


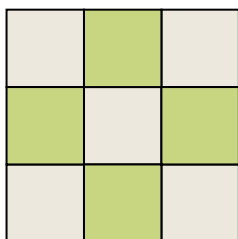
Diagram 3 – Make 64 for Border 7



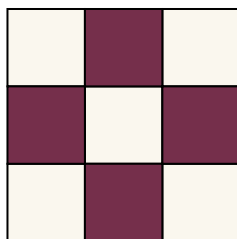
Make 1 in each combination
E & O / H & O / M & R



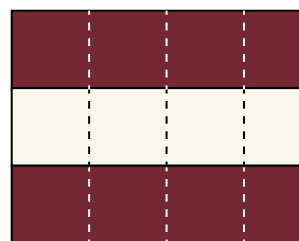
Nine Patch Bands
Make 2



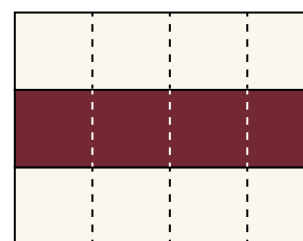
Green Nine Patch
Make 4 of each combination
for Border 5



Maroon Nine Patch
Make 4 of each combination
for Border 5



Make 1 in each combination
F & N / S & N / I & L

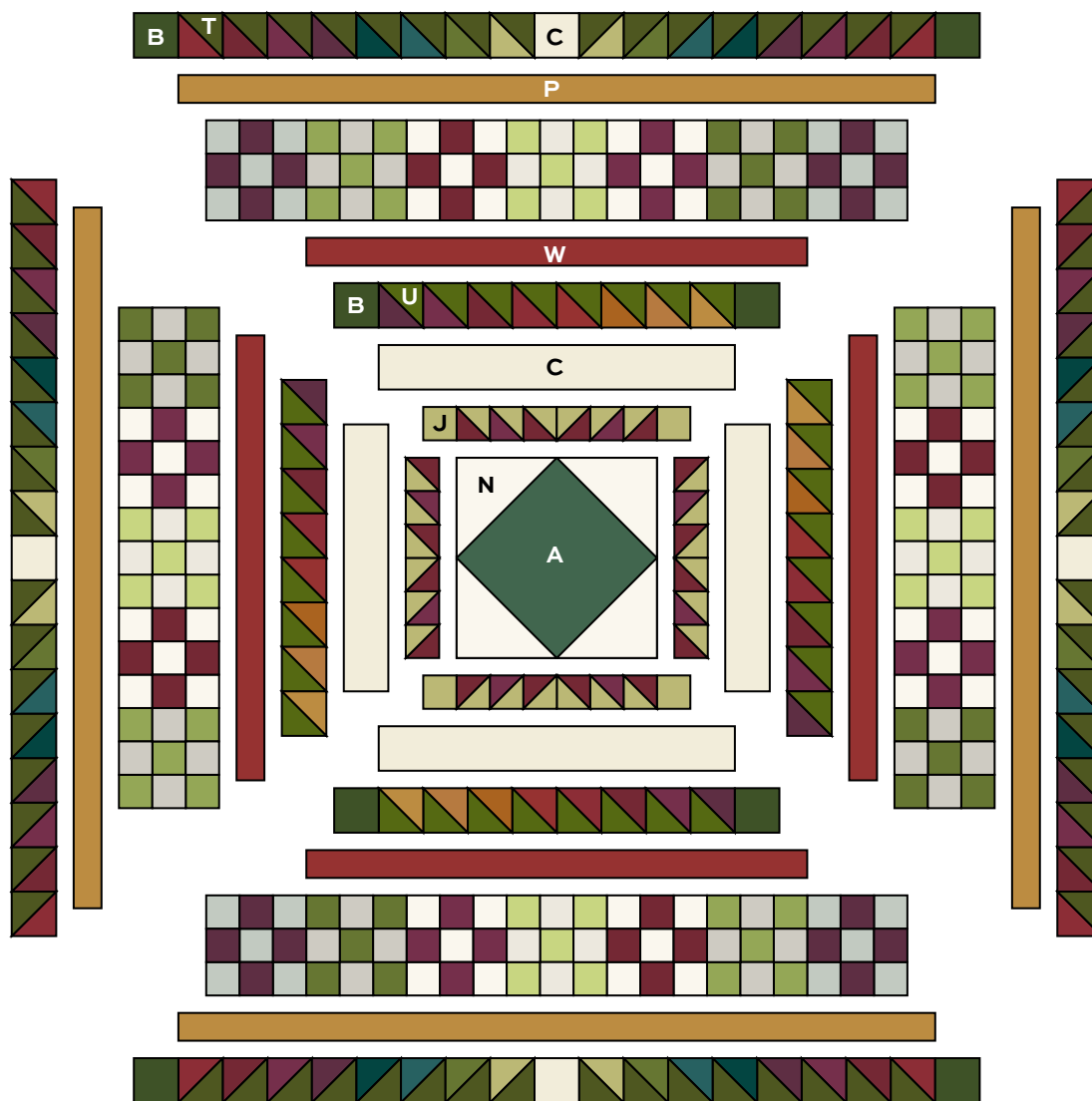


Nine Patch Bands
Make 2

Francesca's Christmas Garden Quilt

- 5. Border 4:** Sew Fabric W 40½" borders to the sides, and sew 45½" borders to the top and bottom.
- 6. Border 5:** Six different Nine-Patch blocks are made with strip-piecing methods. Referring to the Nine-Patch Bands diagrams, join 3½" x 16" fabric strips in the combinations listed, and in the order shown. Make the number of bands listed. Each band should measure 9½" from edge to edge. Press seam allowances toward the dark strips. Cut each band into 4 segments, each 3½" wide. Join the segments to make 4 Nine-Patch blocks of each combination. You should have 12 maroon blocks and 12 green blocks.
- 7. Border 6:** Sew Fabric P 63½" borders to the sides, and sew 68½" borders to the top and bottom.
- 8. Border 7:** Refer to Diagram 3 and follow the directions in Step 2 to make 64 HST using Fabric T 5" (4⅞") squares joined with the 5" squares listed in cutting for Border 7 HST. Trim the HST to 4½" square if needed. Position 16 HST and a Fabric C square in the middle for each of 4 borders, arranging them as shown. Note the orientation of the triangles. Looking through a camera or the wrong end of binoculars may help you find mistakes. Once you are satisfied with the arrangement, join the HST and Fabric C squares to make 4 borders. Sew to the sides of the quilt. Sew a Fabric B square to ends of remaining borders, and sew to the top and bottom.
- 9.** Layer the quilt with batting and backing and baste. Quilt in the ditch around borders and block patches. Quilt around the printed motifs in the center block and in Border 2. Quilt other patches as desired. Bind to finish the quilt.

Finishing the Quilt



Quilt Diagram

Natale

GIUCY GIUCE



9872-G*



9873-G*



9873-L*



9873-R*



9874-G1*



9874-R*



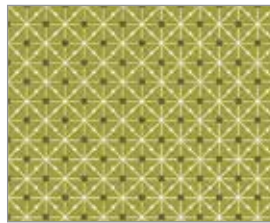
9874-T*



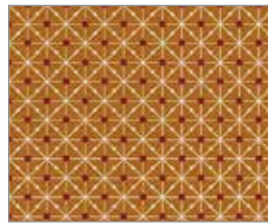
9879-G1*



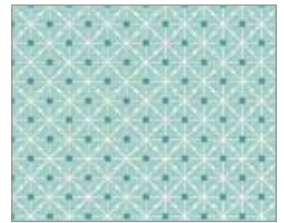
9879-P*



9881-G*



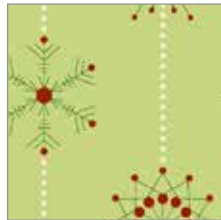
9881-O*



9881-T



673-C*



673-LG*



673-LY*



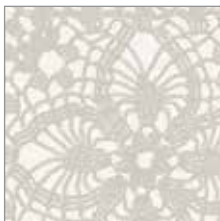
674-LR



674-R*



674-T



675-LC*



675-T



675-Y*



676-G*



676-L*



676-R*

Blend with fabrics from Spectrastatic by Giucy Giuce



9248-G4*



9248-G5*



9248-O5*



9248-R1*

*Indicates fabrics used in quilt pattern. Fabrics shown are 50% of actual size.

andover : makower uk

Free Pattern Download Available
1384 Broadway, 24TH Floor, New York, NY 10018
Tel. (800) 223-5678 • andoverfabrics.com